



ADD \$3.20

TO THE PRICE OF YOUR SUB OR SALAD

Then choose a canned soda or bottle of water (except fruit juice and RedBull) potatoes chips & one cookie

Delicious



All subs and salads include:

Choice of white or wheat bread.
 Choice of cheese: provolone, white or yellow american, swiss.
 Lettuce, tomatoes, onions, black olives, pickles, bell peppers, banana peppers, jalapeño peppers, hot cherry peppers, sweet peppers

Choice of our famous dressing

Mayo, mustard, red wine vinegar, olive oil, spicy or honey mustard.

MEDIUM SALAD \$14.25

Any 2 cold meats or 1 hot meat from Sub Menu. Come with 2 containers of dressing, 1 bag of croutons & 6 slices of cheese.

SUPER SALAD \$17.30

Choose up to 4 cold meats or 2 hot meats from Sub Menu. Come with 3 containers of dressing, 2 bags of croutons and 6 slices of cheese.

COLD SUBS

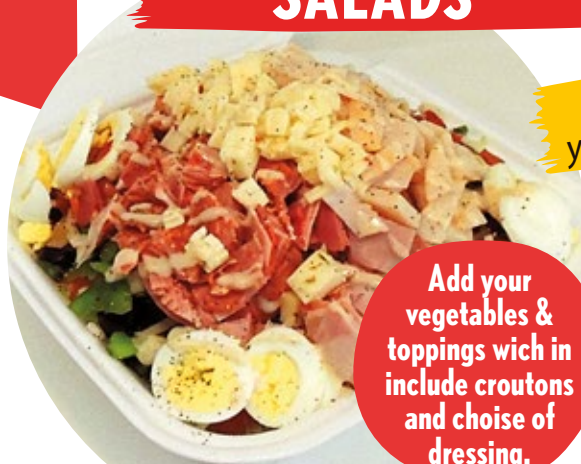
	6 inch	8 inch	Double Meat	
			12 inch	12" Monster
ITALIAN <small>(Capicola ham, Italian salami, boiled ham, pepperoni)</small>	\$7.35	\$9.69	\$14.25	\$18.35
SALAMI	\$7.10	\$8.69	\$13.75	\$17.70
OVEN ROASTED TURKEY <small>(8oz meat for 12")</small>	\$7.10	\$8.69	\$13.75	\$17.70
SMOKED TURKEY ... <small>(8oz meat for 12")</small>	\$7.10	\$8.69	\$13.75	\$17.70
HAM <small>(8 slices for 12")</small>	\$7.35	\$9.69	\$14.25	\$18.35
TUNA <small>(8oz meat for 12")</small>	\$7.35	\$9.69	\$14.25	\$18.35
CLUB <small>(ham/turkey or bacon/turkey or 2 cold meats)</small>	\$7.70	\$9.99	\$15.59	\$19.79
CHICKEN SALAD <small>(10oz meat for 12")</small>	\$7.65	\$9.89	\$14.99	\$18.99
VEGGIE	\$6.10	\$7.55	\$11.70	N/A
BLT <small>(bacon/lettuce/tomatoes)</small>	\$8.75	\$11.20	\$16.99	N/A

HOT SUBS

	6 inch	8 inch	12 inch
BARBECUE PORK PULLED	\$8.99	\$11.59	\$17.79
MEATBALL	\$8.40	\$10.80	\$16.30
HAMBURGER SUB	\$8.99	\$11.59	\$17.79
SAUSAGE PATTIES	\$8.40	\$10.89	\$16.30
STEAK & CHEESE	\$8.99	\$11.59	\$17.79
CHICKEN BREAST (Grilled)	\$8.40	\$10.89	\$16.30
PASTRAMI	\$8.99	\$11.59	\$17.79
GYROS LAMB/BEEF	\$8.99	\$11.59	\$17.79

SALADS

Choose your meat as you would when ordering a sub.



Add your vegetables & toppings wch in include croutons and choise of dressing.

SUB CITY SALAD \$12.20

Chicken/Burger/Steak (with nacho chips)

MEDIUM VEGGIE SALAD (no meat) \$11.20



ADDITIONAL ITEMS

- EXTRA VEGGIE** \$0.99
(16 Oz.)
- SPINACH** \$0.99
(Portion 6 & 8")
- SPINACH** \$1.95
(Portion 12")
- CHICKEN/NOODLES** \$4.20/\$8.40
- SHABANG CHIPS** \$5.99
(Original & Ripple potatoes)
- SHABANG CHIPS** \$6.99
(extreme crunchy)
- TOPPING ON THE SIDE** \$0.99
- BACON** \$1.25
(per slice)
- HARD BOILED EGG** \$1.20
(each)

- EXTRA DRESSING OR CROUTONS** \$0.99
- EXTRA CHEESE** \$1.55
(per 4 slices)
- EXTRA MEAT** \$2.99
(6/8/12inch)
- POTATO CHIPS** \$1.45
- POTATOES STIX** \$0.50
(6"/8")
- POTATOES STIX** \$0.99
(12")
- EXTRA PEPPERONI** \$1.25
(5 slices)
- PLANTAIN CHIPS** \$3.99

SUB CITY WRAPS

- COLD** \$8.79
- HOT** \$9.79
- VEGGIE** \$7.39

HOT OR COLD LITTLE APPETITES

AND KIDS COMBO

- HOT SUB** \$7.99
Chicken or Burger
- COLD SUB** \$6.99
Tuna, Ham or Oven Turkey



Comming with

- A 6" sub (2oz meat)
- Choice of vegetables (no egg)
- Cheese and dressing
- A cookie or a chips
- A caned drink/water
(except fruit juice & RedBull)



BEVERAGES

- SODA/PUNCH/WATER/TEA** \$1.55
- FROZEN** \$2.30
- REDBULL** \$3.99
- FRUIT JUICES** \$2.30



SUB CITY WRAPS

COLD	\$8.79
HOT	\$9.79
VEGGIE	\$7.39

PARTY SUB PLATE

For all your private events Available to order - cold sub only

DELIVERY



COLD MEAT SUBS

	6 inch	8 inch	12 inch
ITALIAN EGGS SUB	\$7.35	\$9.69	\$14.25
SALAMI EGGS SUB	\$7.10	\$8.69	\$13.75
OVEN ROASTED TURKEY EGGE SUB	\$7.10	\$8.69	\$13.75
SMOKED TURKEY EGG SUB ..	\$7.10	\$8.69	\$13.75
HAM EGG SUB	\$7.35	\$9.69	\$14.25
TUNA EGG SUB	\$7.35	\$9.69	\$14.25
CLUB EGG SUB	\$7.70	\$9.99	\$15.59
CHICKEN SALAD EGG SUB ...	\$7.65	\$9.89	\$14.99
VEGGIE EGG SUB	\$6.10	\$7.55	\$11.70
BLT (bacon/lettuce/tomatoes)	\$8.75	\$11.20	\$16.99

HOT MEAT SUBS

	6 inch	8 inch	12 inch
STEAK & CHEESE EGG SUB ...	\$8.99	\$11.59	\$17.79
CHICKEN (Grilled)	\$8.40	\$10.89	\$16.30
BREAST EGG SUB			
PASTRAMI EGG SUB	\$8.99	\$11.59	\$17.79
HAMBURGER EGG SUB	\$8.99	\$11.59	\$17.79
SAUSAGE EGG SUB	\$8.40	\$10.89	\$16.30
EGG & BACON	\$8.75	\$11.20	\$16.99
BARBECUE PORK PULLED EGG	\$8.99	\$11.59	\$17.79
MEATBALL EGG	\$8.40	\$10.80	\$16.30
MEATBALL EGG	\$8.99	\$11.59	\$17.79

OPEN

Monday-Saturday Sunday
8:00am-10:30pm 9:00am-8:30pm

We accept these major credit cards



Sales tax and credit/debit card fees not included

FOLLOW US



19900 NW 2nd Ave. 33169 Miami Gardens FL
www.subcity-miami.com